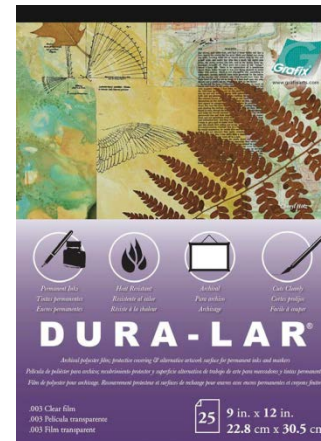


Master your Disaster!

Fixing Watercolor Mistakes

By Laura Pooler



Caveats

These techniques work best on 100% cotton rag watercolor paper like Arches and Fabriano. Heavier paper (300lb) is easier to fix than lighter paper (140lb).

These techniques also work best with professional-quality paints (not student grade).

I am not a professional art teacher. These are only my experiences after 8 years of painting.

Mistake #1

Line Drawing on watercolor Paper is too Dark



Knead dry cleaning pad over drawing to drop eraser shavings onto page.

Wipe shavings lightly with pad until the lines are light enough.

Store pad in box to keep it clean.

Use the SumoGrip eraser for small areas. Very soft and does not damage paper.

Mistake #2

Line Drawing on watercolor paper is too Light



This spray protects against smearing.

You can still erase through it.

Does not wrinkle paper or change its absorbency.

Apply 1 or 2 **very light** coats (spray outside – it stinks!)

Mistake #3

Blooms, Cauliflower, and Back Runs



A damp area will soak up water and paint from a wet area and produce these marks

Still wet? Remove as much paint and water as possible with a dry hake brush and let paper dry. Continue with next step...

Once dry, re-wet section and agitate to loosen and re-distribute paint particles. Let dry again and re-paint.

Always use light pressure – don't scrub.

Mistake #4

Hard, Lined Edges



Blending Brush – “Winsor & Newton Artisan Paint Brush, Long Handle, Size 2, Bright” – synthetic medium stiff

Caused by too much water. The center dries before edges, pushing paint outward.

More likely to occur on thin or low-quality papers.

Manage your wet areas and use a dry brush to soak up puddles.

If the hard edges have dried, use a small damp blending brush to loosen extra paint and redistribute or pick it up with damp brush.

Always use light pressure – don't scrub.

Mistake #5

Runs, Drips, and other Errors



Many wet drips and runs can be picked up immediately with a saturated cotton pad or paper towel. Stains may take a light scrub with a Mr Clean magic Eraser.

A drip on a smooth layer of paint can be saved by wetting the drip, agitating the paint while not lifting it, letting it dry, and then painting on another layer.

The SumoGrip eraser can remove small areas of paint and leave soft edges by wetting the painted section to be erased, waiting 10 seconds, blotting, and using the eraser.



Mistake #6

Other Paint in the wrong places



An xacto knife can be used to pick out a white highlight in an eyeball, for instance. Stick to heavier paper for this technique.

A scrubber brush does what it sounds like – It scrubs and can damage paper. Use with care and only on the worst issues.

Scrubber Brush



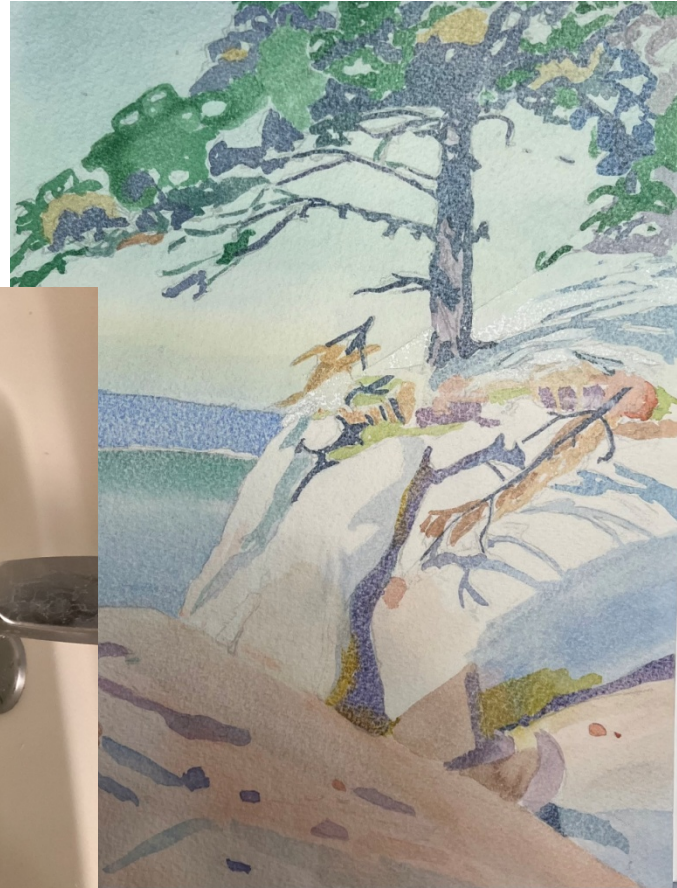
A Mr. Clean Magic Eraser and some tape around the edges can erase a large area of paint.



And if all else fails, you can repaint with Absorbent Watercolor Ground. It won't have the same texture as your paper, but it might save a section of an otherwise wonderful piece of art.

Mistake #7

Painting is too Intense/Dark



Soak in the bathtub

If the composition seems good and there is just too much color, soak your painting in a warm bath for an hour.

Occasionally agitate it, flip it over, and run your hand over it to loosen pigment.

Then re-paint as needed once it is dry.

Mistake #8

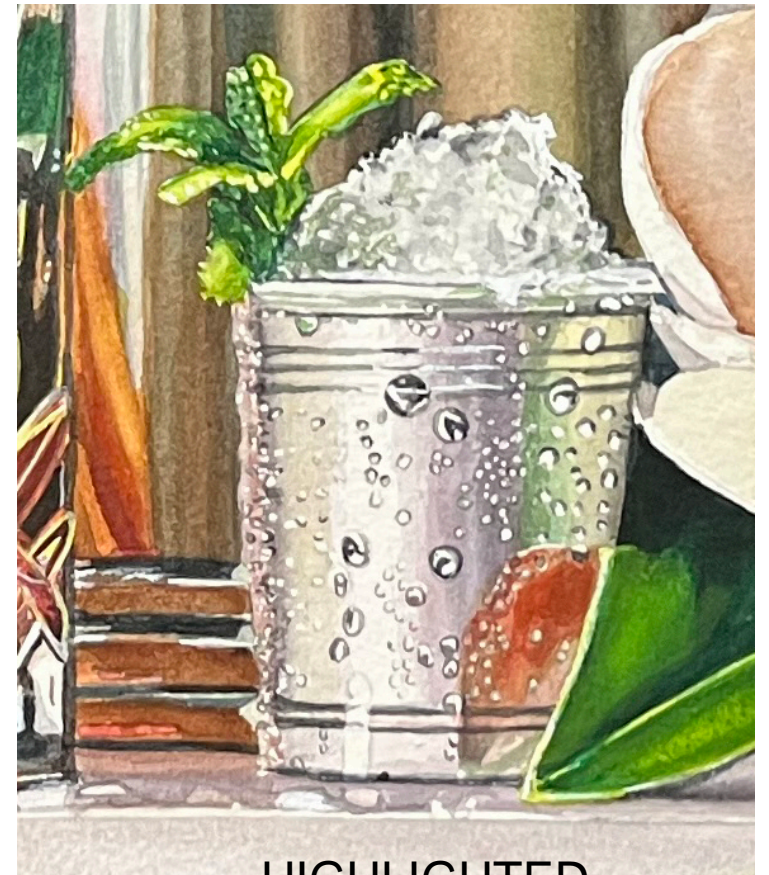
Lost Highlights

“Bleed Proof White” is a paint that goes over watercolor and does not let the pigment underneath bleed through. It is thin, so it doesn’t add texture.

You may tint this color to make, for instance, fire yellow.



BEFORE

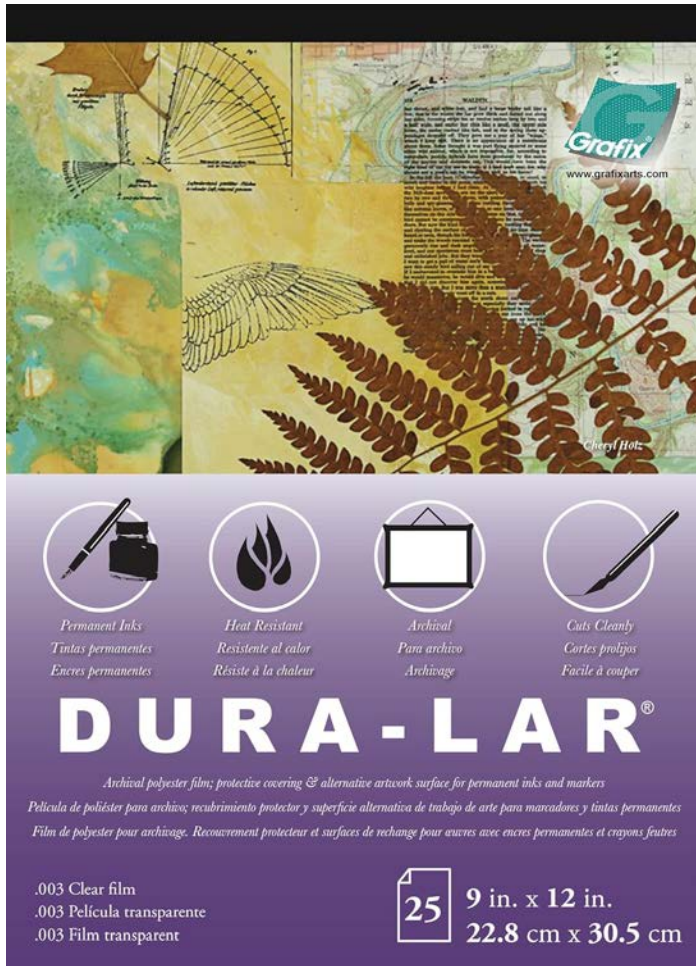


HIGHLIGHTED

Mistake #9

Wrong Colors

Duralar Acetate allows you to “try out” other colors for your painting by placing this clear sheet over your work and painting on top of it.



The advertisement for Duralar Acetate film features a collage of images at the top, including a technical drawing of a fan, a map, a fern frond, and a wing. Below the collage are four circular icons representing different features: a fountain pen and inkwell for permanent inks, a flame for heat resistance, a hanging picture for archival use, and a utility knife for easy cutting. The product name 'DURA-LAR' is prominently displayed in large white letters on a dark purple background. Below the name, there is a small paragraph of text in three languages: English, Spanish, and French. At the bottom left, the product specifications are listed in three languages. At the bottom right, a white box contains the number '25', followed by the dimensions in inches and centimeters.

Permanent Inks
Tintas permanentes
Encres permanentes

Heat Resistant
Resistente al calor
Résiste à la chaleur

Archival
Para archivo
Archivage

Cuts Cleanly
Cortes proflijos
Facile à couper

DURA-LAR[®]

Archival polyester film; protective covering & alternative artwork surface for permanent inks and markers
Película de políester para archivos; recubrimiento protector y superficie alternativa de trabajo de arte para marcadores y tintas permanentes
Film de polyester pour archivage. Recouvrement protecteur et surfaces de rechange pour aigres avec encres permanentes et crayons feutres

.003 Clear film
.003 Película transparente
.003 Film transparent

25 9 in. x 12 in.
22.8 cm x 30.5 cm



If the new colors work out, lift old color and repaint as needed.

The End



Questions? Email me at LauralnVirginia@gmail.com